

TURNITEC

Modular turnstile mechanism

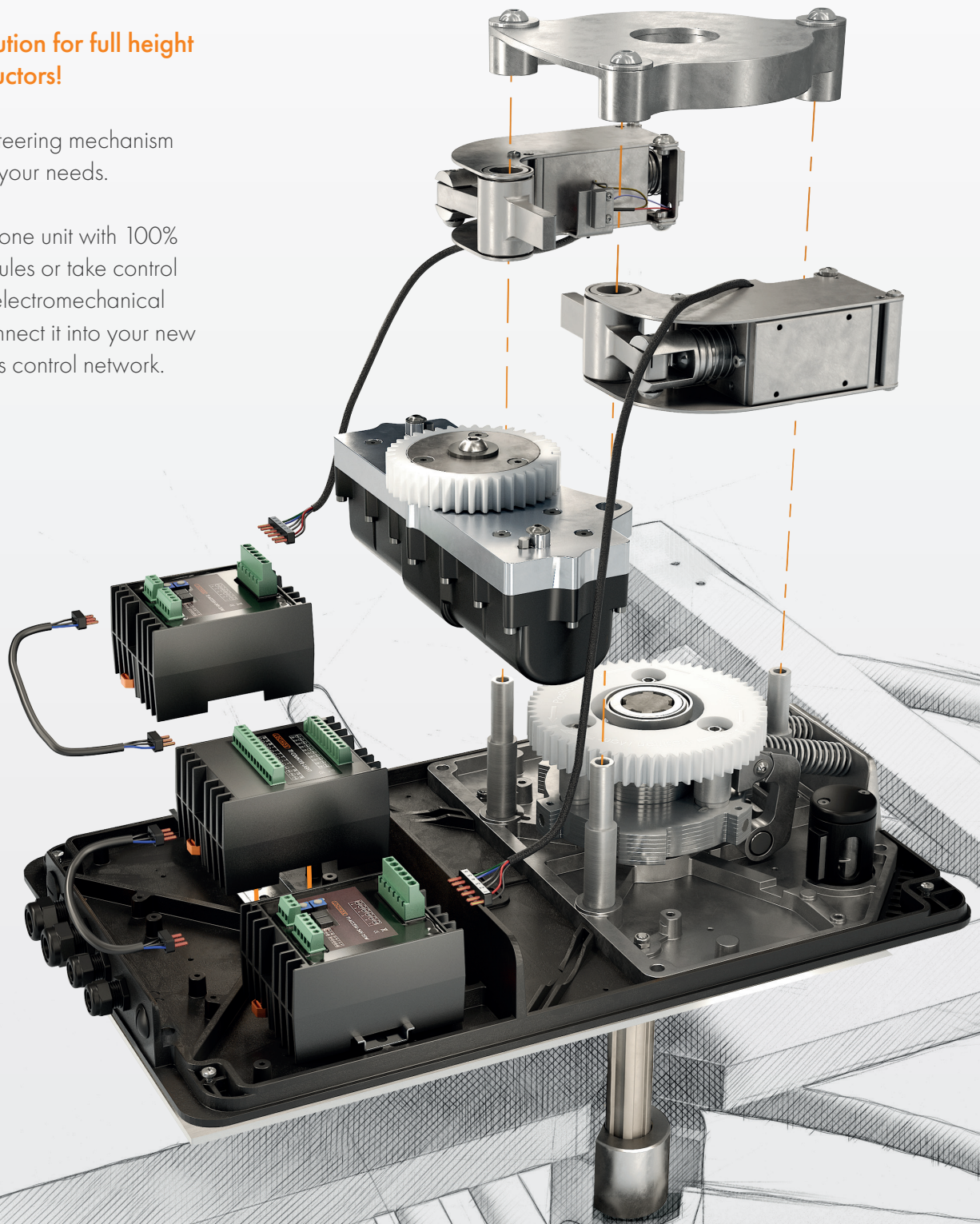
LOCINOX

Let's make better fences together

The perfect solution for full height turnstile constructors!

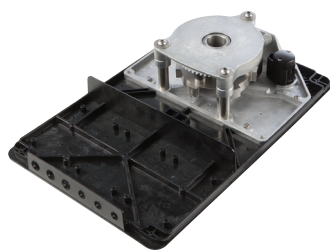
A fully modular steering mechanism which adapts to your needs.

Put it in a standalone unit with 100% mechanical modules or take control by installing the electromechanical modules and connect it into your new or existing access control network.



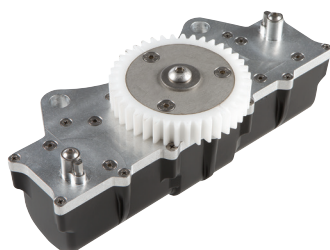
MODULAR TURNSTILE MECHANISM

Our Turnitec modular mechanism is a compact, IP55 housing to bi-directionnaly operate any 3-arm turnstile. It is modular expandable to give you full access control in both the incoming and outgoing direction.



TT-BM3S - BASE MECHANISM

IP55 proof, compact housing (550 x 350 x 170 mm) to bi-directionnaly operate your turnstile free-turning. Modular expandable!

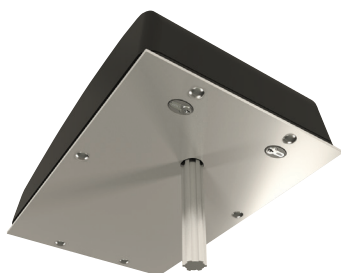


TT-DM3 - OPTIONAL DAMPING UNIT

The second half is damped progressively thanks to the continuous damping of the mechanism. This results in a fluent motion of the turnstile and avoids the turnstile hitting the users heels. The system is unaffected by temperature changes and will perform in every outdoor situation.

EASY TO INSTALL

A pre-drilled welding plate can further simplify your installation.



TT-SSP - STAINLESS STEEL WELDING PLATE

Stainless steel welding plate for a flawless installation of the TURNITEC. With pre-punched drilling patterns and cutouts for cylinders for a guaranteed fast and error-free installation. Also available in black steel. (TT-BSP)



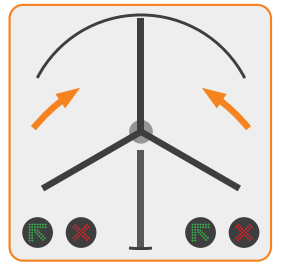
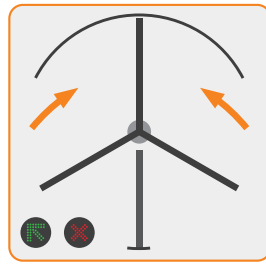
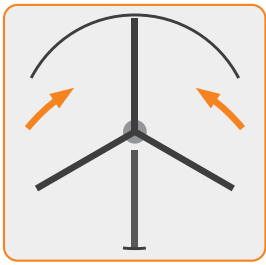
TT-PIVOT - LOWER BEARING AND FLANGE

Stainless steel bearing in a 17 mm thick aluminium footplate. With bearings for a guaranteed smooth operation. Available with ball bearing or tapered roller bearing.



TT-SAH - SEAMLESS CONNECTION

Hub for seamless connection of the Turnitec base mechanism with the spline axle and the turnstile.



POSSIBLE CONFIGURATIONS

Our Turnitec modular mechanism is a highly modular and customizable system to give you full access control in both the incoming and outgoing direction.

A mechanical override is always provided and getting stuck in the turnstile is impossible due to built-in safety mechanisms.

You always have full control over your turnstile, mechanical or electromechanical. Our Plug&Play modules are quickly installed into the base mechanism and the Turnitec can easily be integrated in any access control solution. We have both a Fail-Open as a Fail-Close solution.



TT-MM3S - MECHANICAL CONTROL UNIT

No electricity is needed. The turning directions can be easily closed or opened with a cylinder lock. Anti-passback security prevents against simultaneous entrances.



TT-FC32 - ELECTROMECHANICAL FAIL-CLOSE UNIT

Bidirectional Fail-Close intelligent control. 100% security with minimal staff expense. 24V DC power supply included with integrated display.



TT-FO32 - ELECTROMECHANICAL FAIL-OPEN UNIT

Bidirectional Fail-Open intelligent control. 100% security with minimal staff expense. 24V DC power supply included with integrated display.



TT-CL1 - COUNTER AND LIGHT UNIT

Plug&Play module which enables connecting counters and passing light signals in both turning directions.

TURNITEC POSSIBILITIES

Turnitec modular mechanism offers:

100% QUALITY

- Tested on 500,000 cycles
- Robust system
- Strong connection with the turnstile spindle
- 100% rust free materials
- No exposed components
- IP55 proof housing
- 24V DC power supply

100% SAFETY

- Bi-directionnel access control
- Smooth continuous movement
- Anti-passback security
- Impossible to be trapped in the turnstile
- Manual key-override possible
- Automatic return to start position

100% ACCESS CONTROL

- Optional hydraulic damper
- Easy connect of counter and traffic indicator lights
- (Electro)mechanical Fail-Open or Fail-Close solution

100% EASE OF INSTALLATION

- Easy to work with compact housing
- Optional pre-drilled welding plate
- Plug&Play electrical connectors
- Modular: units can be swapped out



B2B-PORTAL

Fast and easy online ordering

- Every online order: 10 euro discount
- Open 24/7: order anytime, anywhere
- Simulate every product configuration
- Check your order history
- Stock level info



LOCINOX NV.
Mannebeekstraat 21
8790 Waregem
BELGIUM

+32 56 77 27 66
locinox@locinox.com

www.locinox.com