

# LOCINOX

Let's make better fences together



**Locinox locks**

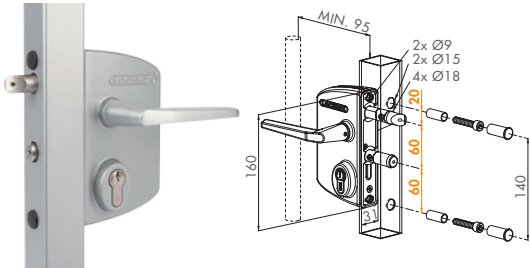
**Built to last**

# INDUSTRIAL



## INDUSTRIAL STANDARD - EUROPROFILE

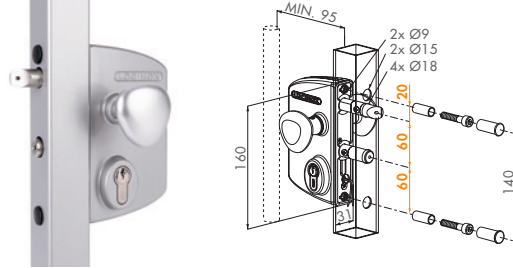
Aluminium powdercoated housing and stainless steel mechanism.



|         |      |      |      |                 |
|---------|------|------|------|-----------------|
| LAKQ U2 | 3030 | 4040 | 6060 | SQUARE PROFILES |
| LARQ U2 | 3030 | 4040 | 6060 | ROUND PROFILES  |
| LAPQ U2 | 1010 | -    | -    | FLAT PROFILES   |

## ELECTRIC LOCK - FAIL-OPEN

If the lock is under power, the handles are blocked. 20 mm adjustability of the bolts.



|          |      |      |      |                 |
|----------|------|------|------|-----------------|
| LEKQ U4L | 3030 | 4040 | 6060 | SQUARE PROFILES |
| LERQ U4L | 3030 | 4040 | 6060 | ROUND PROFILES  |

## KEEP - STANDARD

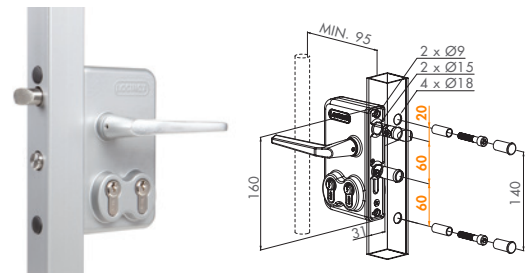
Aluminium, stainless steel. Adjustable stopplate accepts 60 mm profiles.



|         |                 |
|---------|-----------------|
| SAKL QF | SQUARE PROFILES |
| SARL QF | ROUND PROFILES  |

## DOUBLE CYLINDER - THIRD PARTY ACCESS

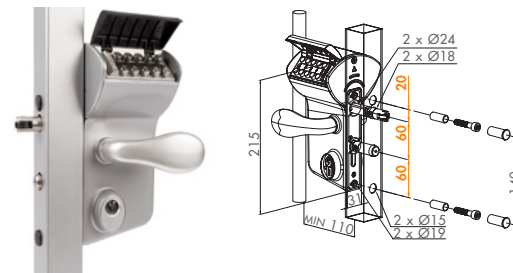
Aluminium powdercoated housing and stainless steel mechanism.



|          |      |      |      |                 |
|----------|------|------|------|-----------------|
| LDKZ D1L | 3030 | 4040 | 5050 | SQUARE PROFILES |
| LDRZ D1L | 3030 | 4040 | 5050 | ROUND PROFILES  |
| LDPZ D1L | 1010 | 2323 | -    | FLAT PROFILES   |

## MECHANICAL CODE LOCK - DOUBLE PANEL

Operational code panel on both sides. No batteries/electricity required.



|          |      |      |      |                 |
|----------|------|------|------|-----------------|
| LMKQ V2L | 3030 | 4040 | 6060 | SQUARE PROFILES |
| LMRQ V2L | 3030 | 4040 | 6060 | ROUND PROFILES  |
| LMPQ V2L | 1010 | -    | -    | FLAT PROFILES   |

## KEEP - SECURITY

Patented anchoring-system.



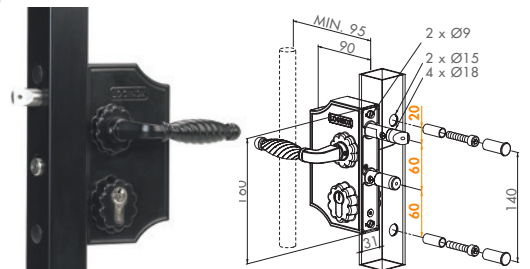
|         |                 |
|---------|-----------------|
| SHKL QF | SQUARE PROFILES |
| SHRL QF | ROUND PROFILES  |

# ORNAMENTAL



## ORNAMENTAL LOCK - LARGE HOUSING

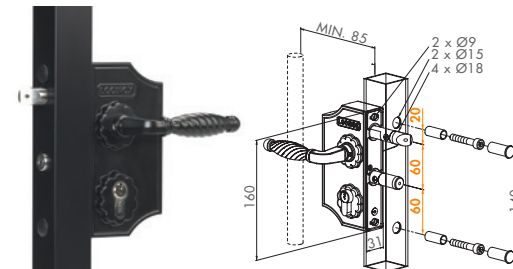
Advised as standard for all ornamental gates. 20 mm continuous adjustability of the bolts.



|          |      |      |      |                 |
|----------|------|------|------|-----------------|
| LAKQ H2L | 3030 | 4040 | 5050 | SQUARE PROFILES |
| LARQ H2L | 3030 | 4040 | 5050 | ROUND PROFILES  |
| LAPQ H2L | 1010 | -    | -    | FLAT PROFILES   |

## ORNAMENTAL LOCK - SMALL HOUSING

Advised as standard for all ornamental gates. 10 mm continuous adjustability of the bolts.



|          |      |      |      |                 |
|----------|------|------|------|-----------------|
| LAKY F2L | 3030 | 4040 | 5050 | SQUARE PROFILES |
| LARY F2L | 3030 | 4040 | 5050 | ROUND PROFILES  |
| LAPY F2L | 1010 | -    | -    | FLAT PROFILES   |

## KEEP - ORNAMENTAL

Flat keep with polyamide box to integrate in the post.



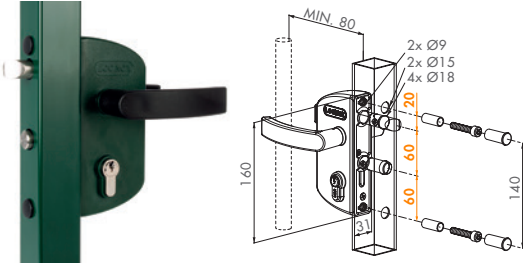
|         |                      |
|---------|----------------------|
| SPKZ QF | KEEP                 |
| SPKZ TK | KEEP WITH COUNTERBOX |

# GARDEN



## GARDEN GATE - STAINLESS STEEL MECHANISM

Economical garden/walking gate lock with polyamide housing and stainless steel mechanism.



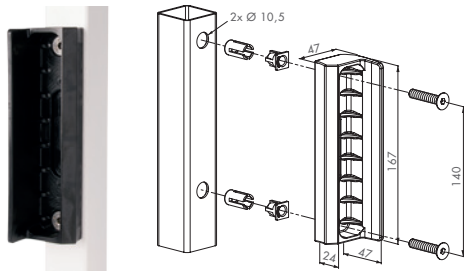
LAKZ P1L 4040 SQUARE PROFILES

LARZ P1L 4040 ROUND PROFILES



## KEEP - FOR SQUARE PROFILES

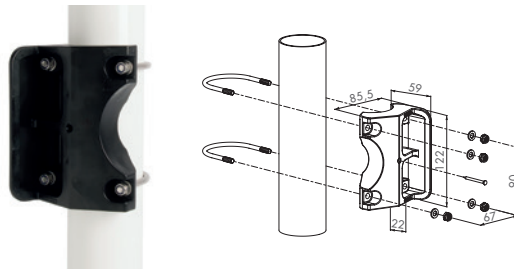
Polyamide keep for walk- and garden gates. Quick-Fix ensures a fast and strong mounting.



SMKL QF POLYAMIDE KEEP FOR SQUARE PROFILES

## KEEP - FOR ROUND PROFILES

Polyamide keep for walk- and garden gates. The brace-fixing ensures a fast and strong mounting.



SKRZ POLYAMIDE KEEP FOR ROUND PROFILES

## HANDLE - GARDEN

Polyamide handle pair.



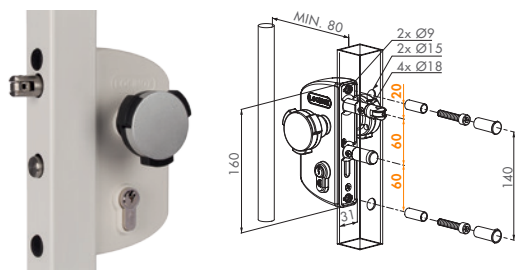
3006P HANDLE PAIR

# CHILD SAFETY



## SWIMMING POOL LOCK - KIDLOC HANDLE

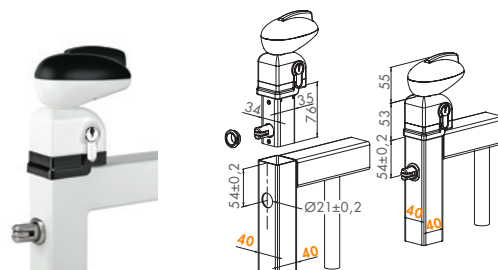
Stainless steel mechanism and polyamide housing. This lock is conform to the swimming pool standard NF P90-306.



LAKZ P1 WSI 4040 5050 - SQUARE PROFILES

## SWIMMING POOL LOCK - TWIST40

Conform to swimming pool standard NF P90-306. 2-handling operation which prevents access to the pool for little children.



TWIST SQUARE 40 MM PROFILES

## HANDLE - CHILD SAFETY

Stainless steel and polyamide security knob provides child safety.



KIDLOC SAFETY HANDLE

# HYBRID INSERT LOCKS



## FORTYLOCK - 100% STAINLESS STEEL

Stainless steel insert lock with 37 mm lockbox and 20 mm backset.



- FORTYLOCK** SQUARE PROFILES
- SFKI** INSERT STAINLESS STEEL KEEP FOR FORTYLOCK
- SFKB** STAINLESS STEEL SECURITY KEEP FOR FORTYLOCK

## H-WOOD - 60 MM BACKSET

20 mm adjustable latch bolt with stainless steel hook for night locking.



- H-WOOD** FOR PROFILES WITH A MIN. DEPTH OF 85 MM.
- SHKW** FOR WOODEN POSTS WITH H-METAL OR H-WOOD

## COVER - 3020-HYB

Cover shield for insert locks.



- A2** STAINLESS STEEL
- ALU** ALUMINIUM
- STD** POLYAMID

## H-METAL - STRONG ANCHORING

Insert lock with 100% stainless steel mechanism and with 35 mm backset.



The SHKM keep in combination with the Hybrid lock ensures a strong gate anchoring.

- H-METAL** FOR PROFILES WITH A MIN. DEPTH OF 60 MM
- SHKM** FOR SQUARE POSTS WITH H-METAL LOCK

## H-COMPACT - SOLUTION WITHOUT HANDLES

100% stainless steel insert lock with hook for a mechanical closure of (automated) sliding gates.



- H-COMPACT** FOR PROFILES WITH A MIN. DEPTH OF 60 MM
- SHKC** FOR SQUARE POSTS WITH MIN. DEPTH OF 40 MM

## HANDLE

Stainless steel handle pair with 8 mm follower



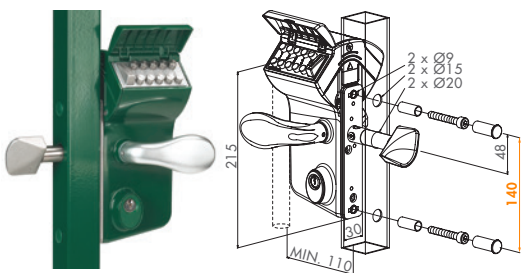
- 3006I-H** STAINLESS STEEL

# SLIDING GATES



## MECHANICAL CODE LOCK - DOUBLE PANEL

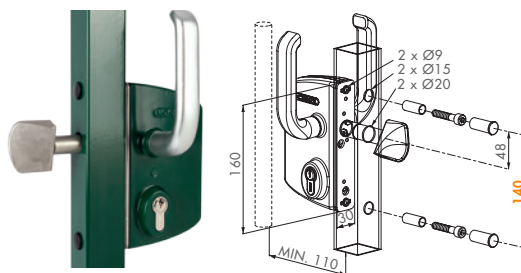
No batteries or electricity. Easy access control for sliding gates on distant terrains.



- LLKZ V2L** SQUARE 40 TO 120 MM PROFILES
- LRZ V2L** ROUND 40 TO 120 MM PROFILES

## SLIDING GATE LOCK - TWISTFINGER

Mechanism and Twisfinger in stainless steel.



- LSKZ U2L** SQUARE 40 TO 100 MM PROFILES
- LSRZ U2L** ROUND 40 TO 100 MM PROFILES

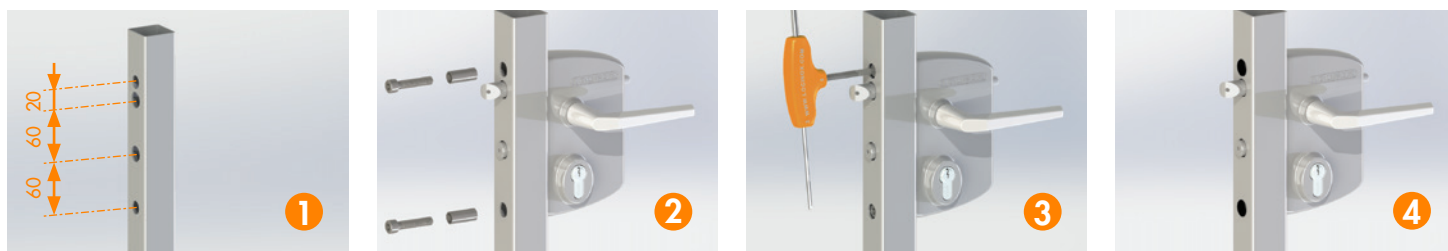
## KEEP - SLIDING GATES

Aluminium keep with Quick-Fix fixings.



- SKZ QF** SQUARE PROFILES

# 1 METHOD OF INSTALLATION FOR ALL OUR LOCKS

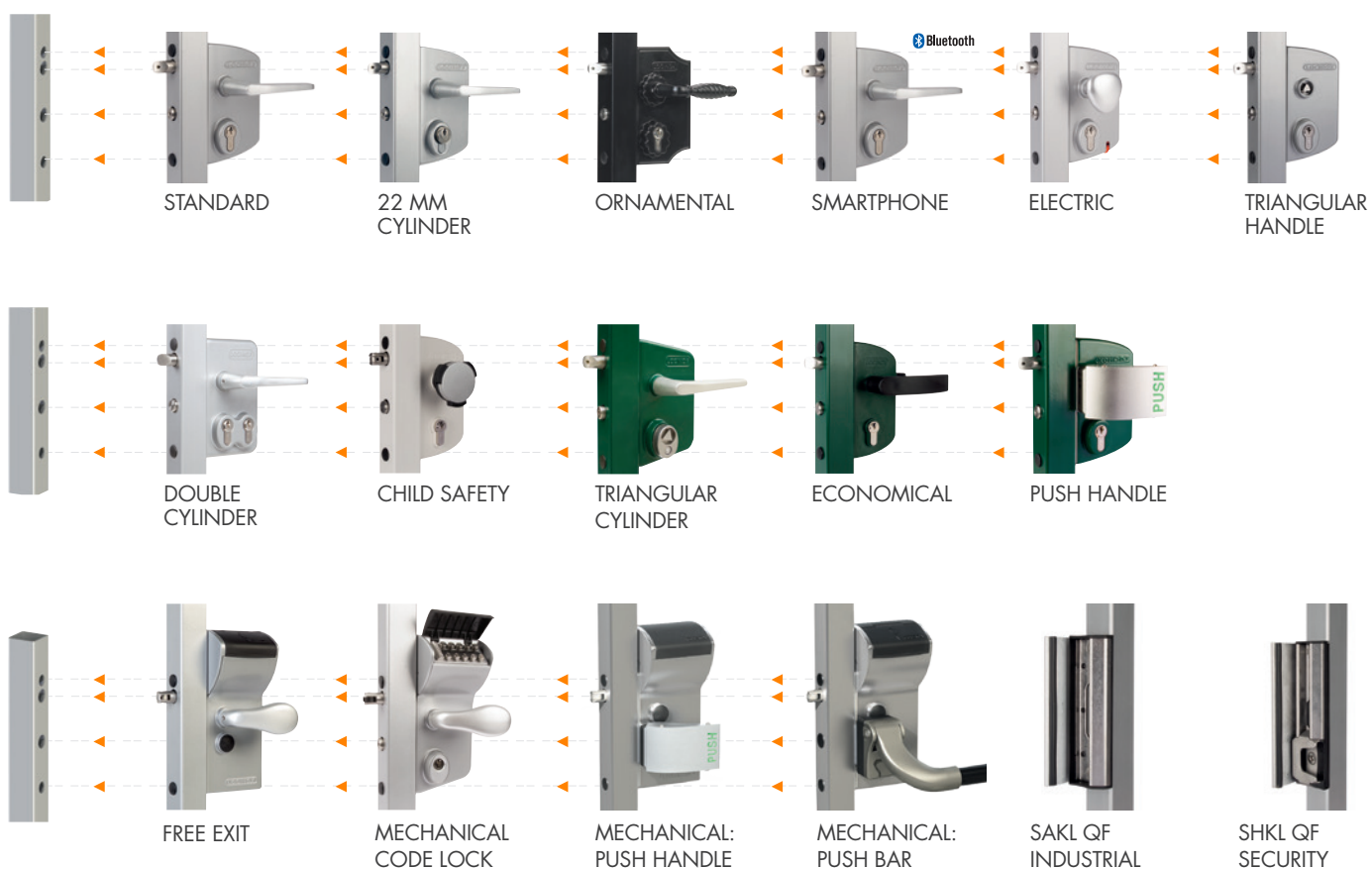


# 1 PREPARED PROFILE = A MULTITUDE OF POSSIBILITIES

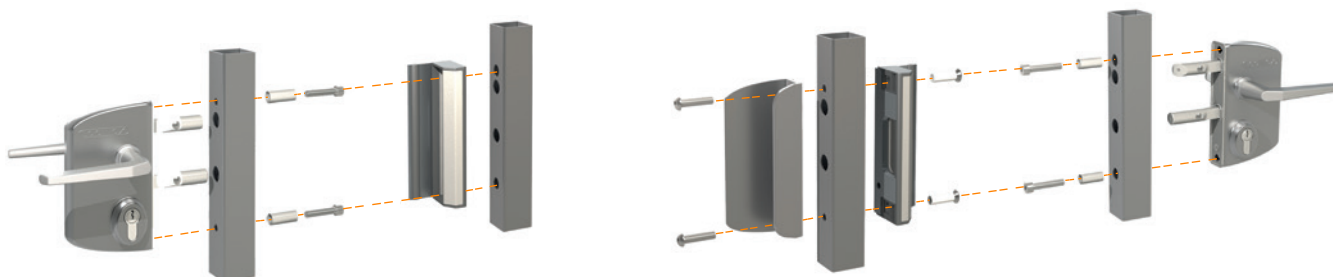
One drilling template for all locks LA, LE, LD and LM and strikes SA, SH and SM.

With this interchangeability, the Locinox lock gives you the opportunity to offer:

A solution for every situation.



## STANDARDISATION OF WING GATES



Standardisation of a gate wing. The lock, keep and the counter pullbox are all installed in the same way and they are all left/right reversible.

# 100% QUALITY



- ▶ Solid stainless steel bolts
- ▶ Adjustment of the bolts up to 20 mm without removing the lockbox
- ▶ Throw of the deadbolt, 23 mm in 1 turn of the key
- ▶ Key-operated self-latching bolt
- ▶ Easy left or right changing of the self-latching bolt
- ▶ Tested on a minimum of 500.000 cycles

- ▶ Aluminium diecasted lockbox (270 gr)
- ▶ KTL powdercoating : 1000h salt spray resistant

- ▶ Handle in anodised aluminium (180 gr)
- ▶ Corrosion resistant: 1000h salt spray resistant

- ▶ Mecanism: 100% stainless steel

- ▶ Europrofile cylinder 27/27 (60% brass)
- ▶ Cylinder size independant of profile size

- ▶ Mounted on the inside of the post
- ▶ Resists 1400 kg. pulling force



**LOCINOX**

TEL. +32 (0)56 77 27 66  
FAX. +32 (0)56 77 69 26

MANNEBEEKSTRAAT 21  
8790 WAREGEM  
BELGIUM

E-MAIL: [LOCINOX@LOCINOX.COM](mailto:LOCINOX@LOCINOX.COM)  
WEBSITE: [WWW.LOCINOX.COM](http://WWW.LOCINOX.COM)